



Industrial Illuminated Magnifiers

- ✓ Designed for industrial applications using renowned Luxo arm technology
- ✓ Large, high quality optics, for comfortable and effective viewing
- ✓ Powerful, controllable light output using the latest LED technology
- ✓ ESD & UV variants available for specialist industry requirements
- ✓ Made in Norway

WAVE LED ▪ Wave LED ESD Wave LED UV ▪ Wave LED ESD UV

Industrial rectangular lens LED bench magnifier



No knobs to tighten, nothing to adjust. The WAVE LED / LED ESD / LED UV / LED ESD UV has a flexible, self-balancing

head and hands free neck assembly which allows the lamp head to be secured in any position. The fully-enclosed neck design is ideal for mechanical, electronics, dental, jewellery and other precision applications, preventing dust/dirt build up for longer life and easier cleaning.

WAVE LED / LED ESD / LED UV / LED ESD UV offers shadow free magnification and 3 dimensional illumination with selectable left/right light control. Wave LED ESD and Wave LED ESD UV has been designed for industrial applications where electrostatic discharges can damage electronic components.

Circus LED

Large diameter round bench magnifier



No knobs to tighten, nothing to adjust. Circus LED is specially designed to withstand the rigors of everyday use in industrial and

manufacturing applications where foreign object debris (FOD) is a concern.

Circus LED has a highly flexible, self-balancing head allowing it to be positioned vertically, horizontally and laterally. The fully enclosed neck and internal spring-balanced arm makes the Circus LED ideal for environments where cleanliness is sought.

KFM ▪ KFM LED KFM LED ESD

Multi-purpose industrial bench magnifier



KFM / KFM LED / KFM LED ESD has a robust all-metal construction with sleek design, a flexible arm and excellent light output.

It is suitable for all industrial and professional applications.

The flexibility of the joint between the head and the arm makes exact positioning very easy. The quality of the LED illumination allows for virtually shadow-free magnification and excellent color rendering. KFM LED ESD is designed to drain away static charges, as they occur, in a controlled manner.

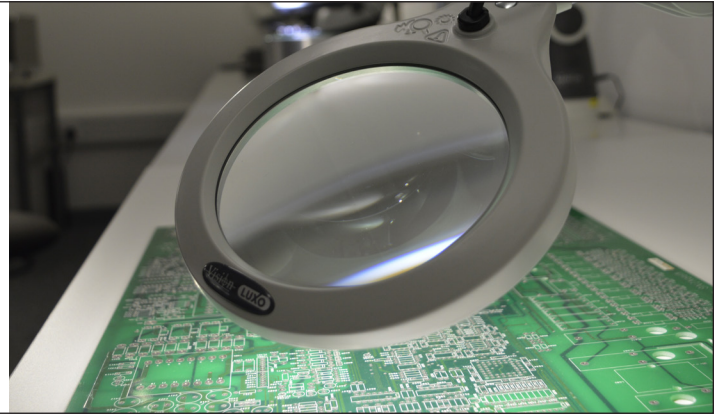
LFM LED G2

Lightweight illuminated bench magnifier



LFM LED G2 is a lightweight magnifier with all-metal construction, LED light source and a flexible internal spring-balanced arm. It is suitable for professional and industrial applications where cost effective, detailed magnification is required.

The LFM LED G2 is supplied with a 5" glass lens with either a 3 or 5 diopter primary lens. This bench magnifier is equipped with full circle, flicker-free illumination, resulting in virtually shadow-free viewing.



Comparison Chart

Model	Light Source	Body Material & Color	Mounting	Optics	Arm Technology & Movement	Timer & Dimming
Wave LED Wave LED ESD Wave LED UV Wave LED ESD UV	2 x 6W dimmable LED modules. Brightness 4600 lux at 11" (279mm) focal length. 4000°K correlated color temperature (CCT). 80 color rendition index (CRI).	Steel arm, aluminum head in light grey. WAVE LED ESD steel arm, aluminum head, black only.	Edge clamp as standard. Weighted base and other clamps and mounts available.	3.5 (1.88x) or 5 (2.25x) diopter, 6.7" x 4.4" rectangular crown glass lens. (171mm x 114mm)	Heavy duty internal spring 45" or 30" (1143mm or 762mm) parallel, three-pivot K-arm.	Step dimming 0-50-100%. Selectable left / right illumination. Auto shut-off function.
Circus LED	10W total energy consumption. Brightness 3830 lux at 11" (279mm) focal length. 4000°K correlated color temperature (CCT). 90 color rendition index (CRI).	Steel arm with aluminum head. Fully enclosed neck design. White with black accents.	Edge clamp as standard.	3.5 (1.88x) or 5 (2.25x) diopter, 6.5" (165mm) diameter crown glass lens.	Heavy duty internal spring 45" (1143mm) parallel, three-pivot arm with 0.75" (19mm) diameter of steel tubing.	Dimming 10-100%. Auto shut-off function.
KFM KFM LED KFM LED ESD	2 x semi-circular 9W LED modules. Brightness 3000 lux at 13" (330mm) focal length. 4000°K correlated color temperature (CCT). 80 color rendition index (CRI). KFM, 22W cool white, circular fluorescent. Built-in starter switch.	KFM LED steel arm, aluminum head in light grey. KFM LED ESD steel arm, aluminum head, black only.	Edge clamp as standard. Weighted base and other clamps and mounts available.	3 (1.75x) or 5 (2.25x) diopter, 5" (127mm) white crown glass lens.	Heavy duty internal spring 45" or 30" (1143mm or 762mm) parallel, three-pivot K-arm.	LED light modules are dimmable 1-100%. Auto shut-off function.
LFM LED G2	9W dimmable LED modules. 1750 lux at focal length 13". 4000°K correlated color temperature (CCT). 80 color rendition index (CRI).	Die-cast aluminum housing in light grey.	Edge clamp as standard. Other mounts available.	Optics: 3 (1.75x) or 5 (2.25x) diopter, 5" (127mm) diameter lens.	Internal-spring 30" or 45" parallel, 3 pivot K-arm.	Step dimming 0-50-100%. 9/4 hour shut-off function.

NOTE: Secondary lenses are available for all models: 4, 6 or 10 diopter STAYS lens can be attached to the primary lens. Weighted base is available for 30" arm models only.

Our Full Inspection Range

We offer a range of inspection microscopes to take your magnification to the next level. Our patented eyepiece-less optical microscopes offer 3 Dimensional images with ergonomic benefits to users. All systems can be fitted with a camera, making it ideal for image capture, training and reporting.

Our digital inspection microscope, EVO Cam II, offers stunning image quality, live video streaming and a large field of view and working distance. Visit our website for more information.



EVO Cam II
Digital Microscope



Camß
Handheld Digital Magnifier



Lynx EVO, Mantis Compact & Mantis Elite/HD Cam
Eyepiece-less Stereo Microscope



SX Series
Stereo Microscope

vision-luxo_7_2018_NA V5

Have a question? Call toll-free on (800) 644-7264
www.visioneng.us